

Duo

Simplicity Reimagined

Beautifully crafted designs that add the perfect finishing touch to our Sound Out™ Acoustical Panels.



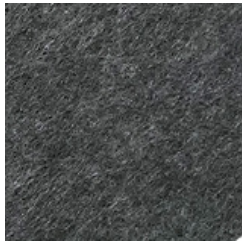
Duo is designed in two parts, pairing our flat PET panels with one of six decorative base designs.

Select Your Color

Duo is available in **95 rich colors** with the option of 3 quick ship neutrals.



SO-05



SO-25

Select Your Style

All Duo designs are currently available in V groove patterns. Designs are exclusive to Duo, and carved into DFB's PET panels using the same method we use for Sound Out™ Lane.

Select Your Base Design

Select your favorite design from our gallery.

SPECIFICATIONS

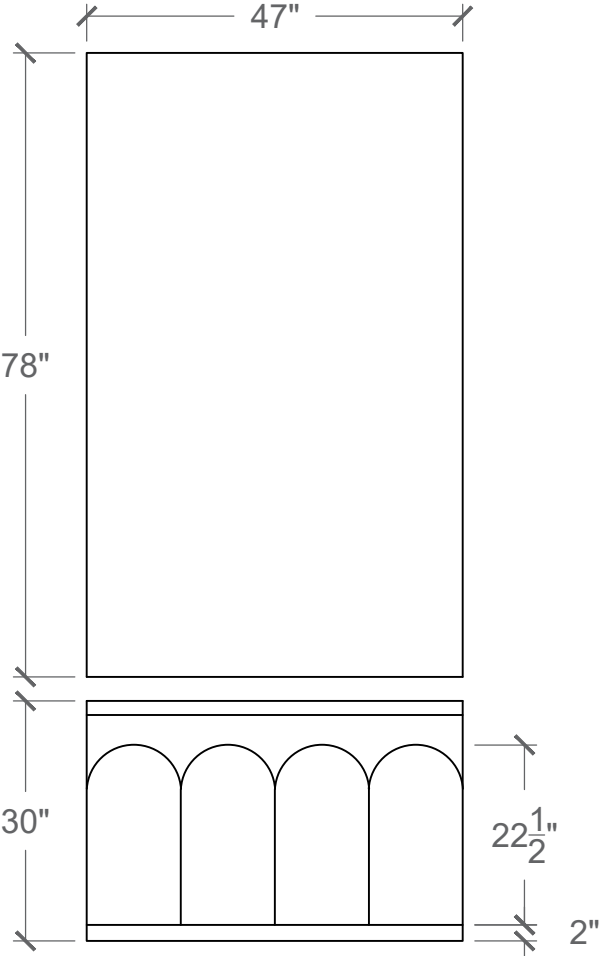
Composition:	100% Polyester Fiber (PET)
Panel Thickness:	0.47" or 0.94" (12, 24mm)
Panel Width:	47" (1220 mm)
Overall Height:	109" (2800 mm)
Base Height:	30"
Top Panel Height:	78"
V Groove Depth:	6.5mm (Frame 3mm & 11mm)
Custom:	Trim pieces available based on finish wall size
Lead Time:	5-7 weeks (project specific)
Acoustics:	ASTMC 423: 1" 0.75 NRC, 0.74 SAA; 1/2" 0.33 NRC, 0.30
Environmental:	75% recycled PET material.





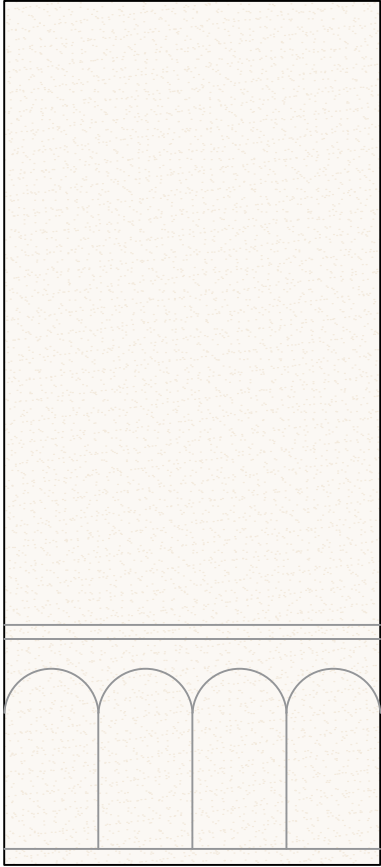
Petal 2.0

ARCH



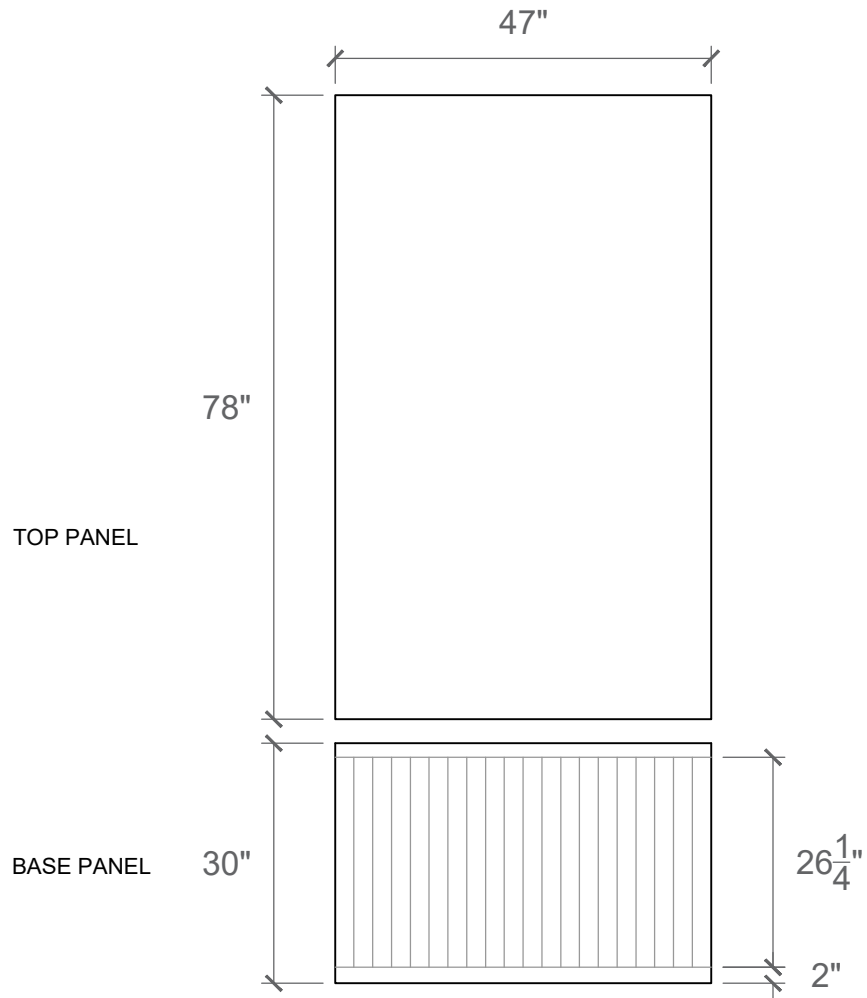
TOP PANEL

BASE PANEL

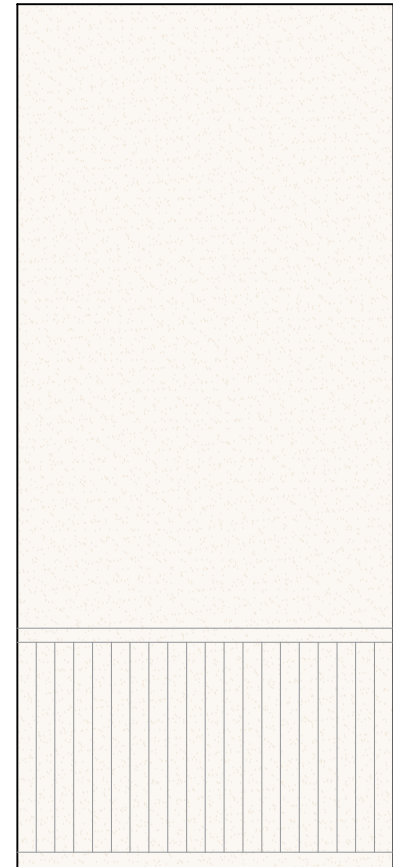


6.5 mm groove depth

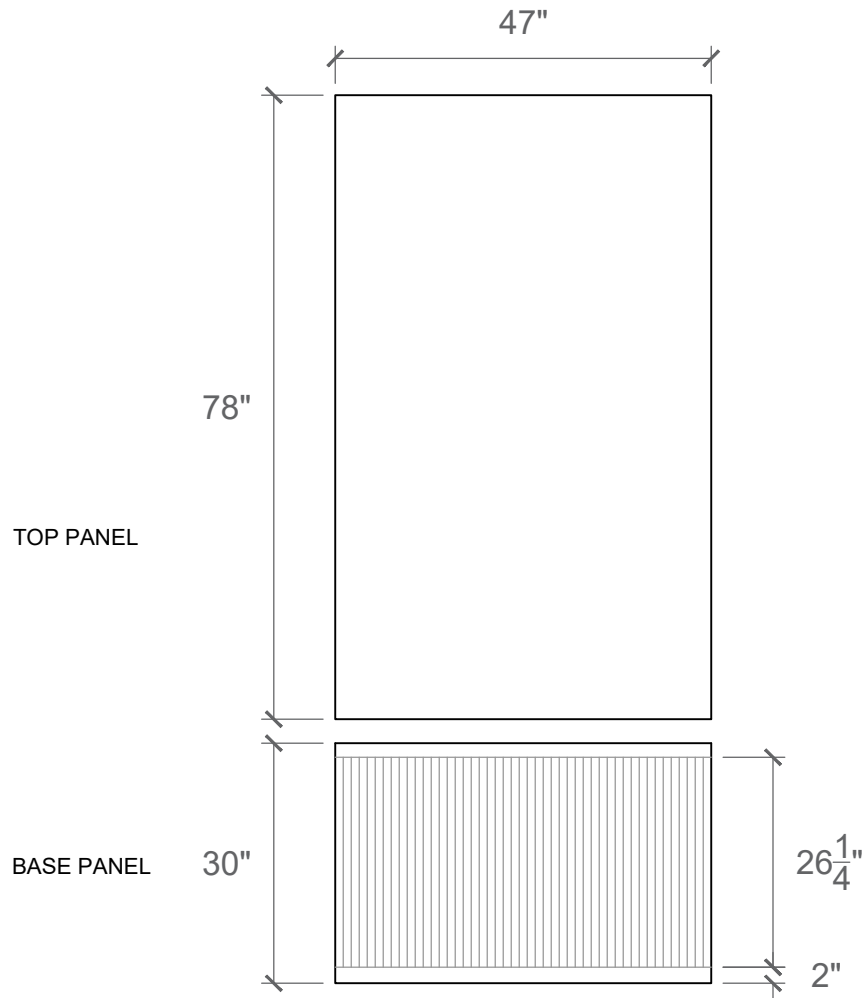
LINEAR 1



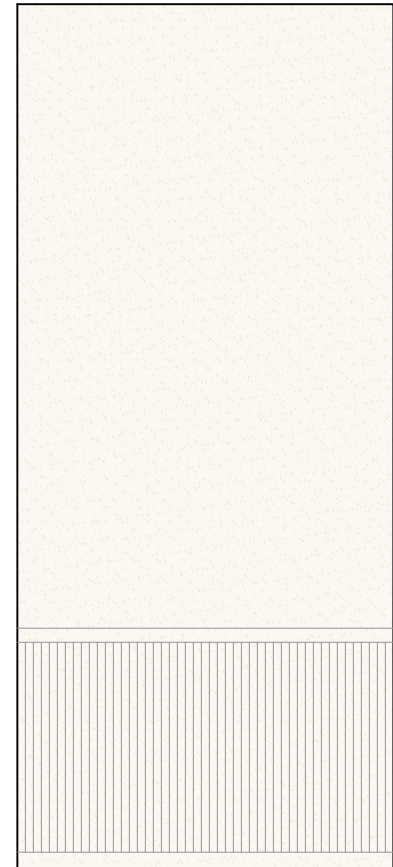
6.5 mm groove depth
Spacing: 2.9375"



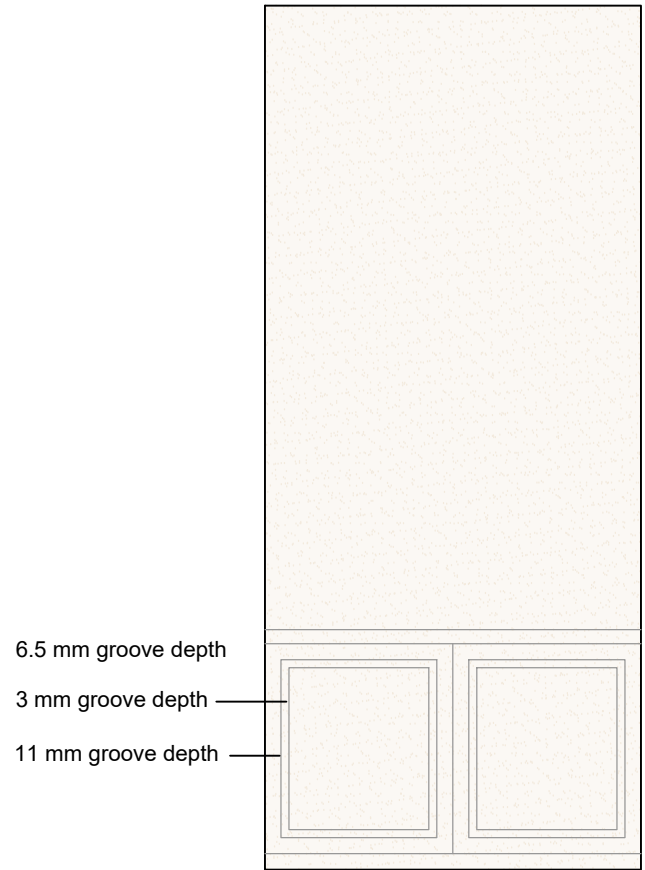
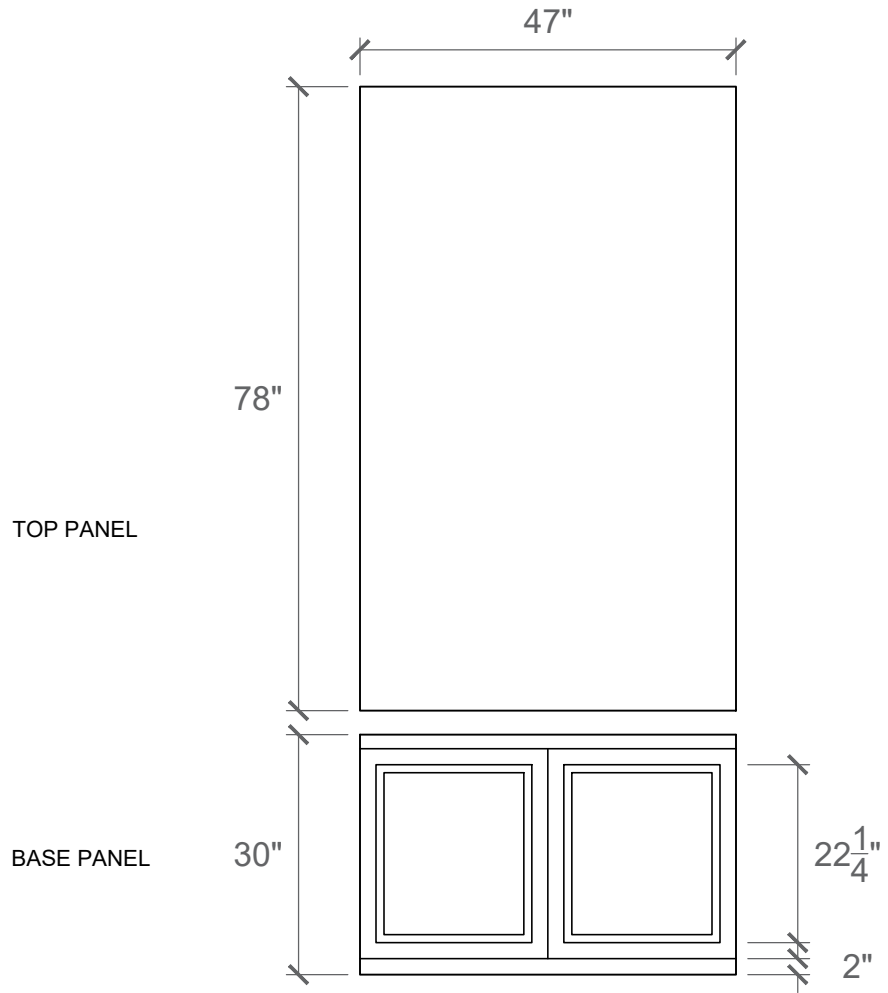
LINEAR 2



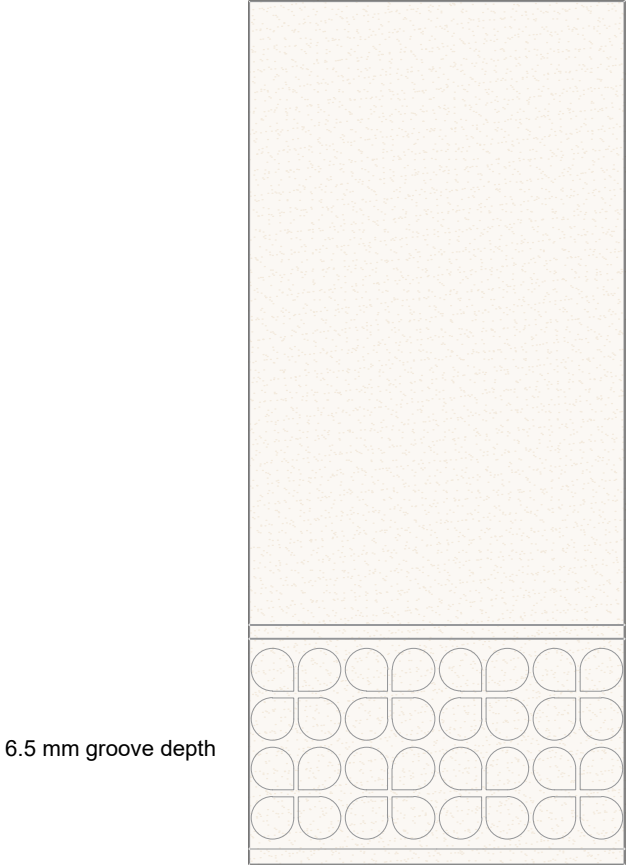
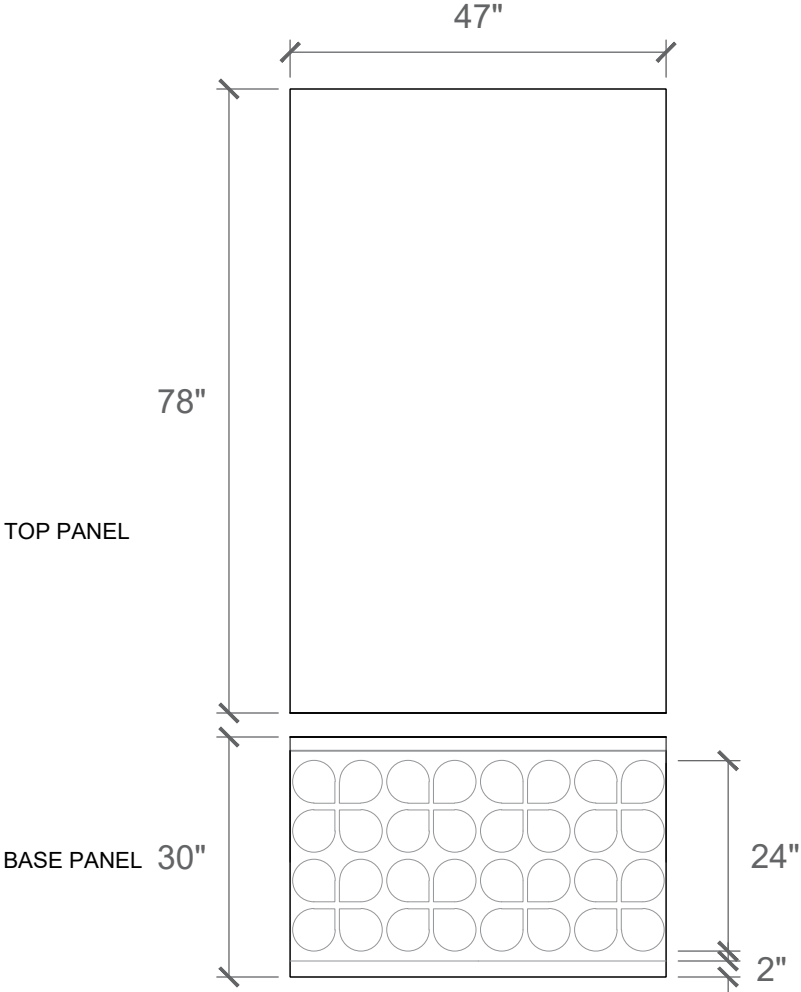
6.5 mm groove depth
Spacing: 1"



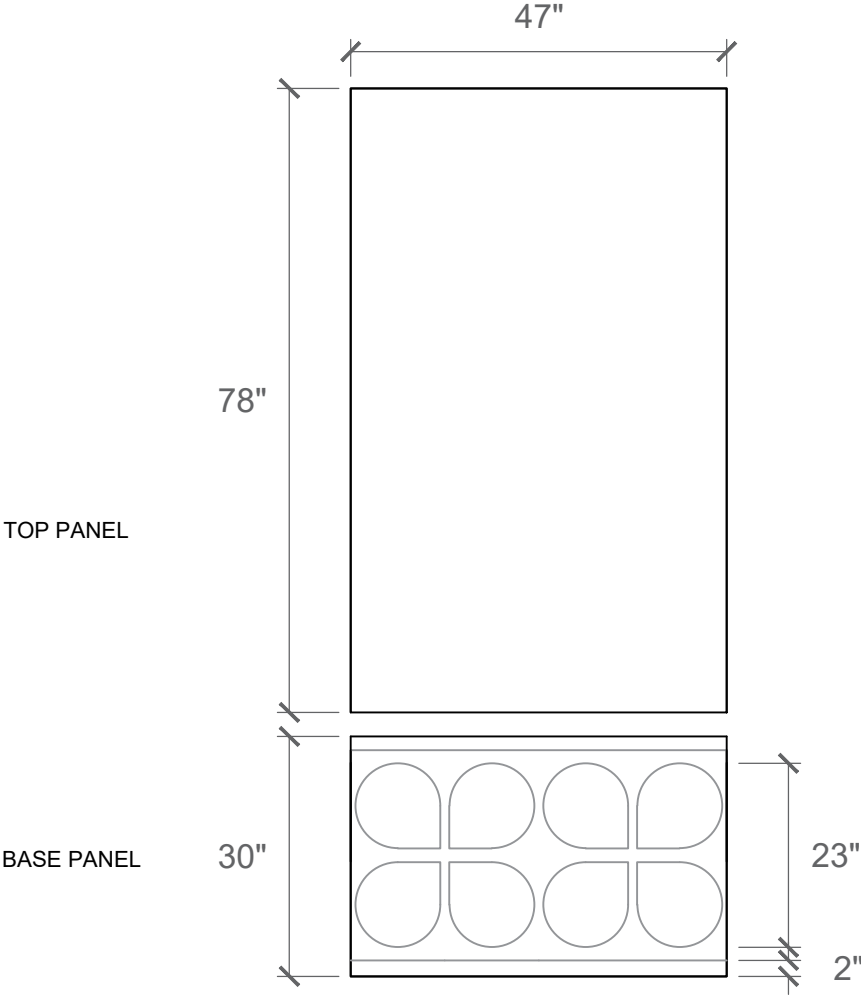
FRAME



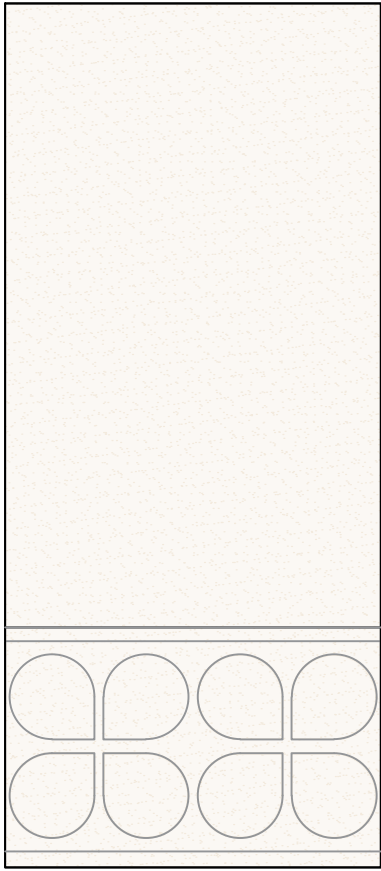
PETAL



PETAL 2.0



6.5 MM GROOVE DEPTH



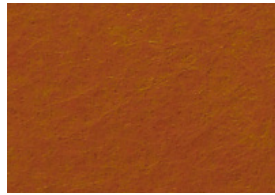
SO Colors



SO-01



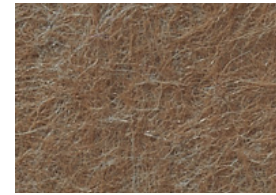
SO-02



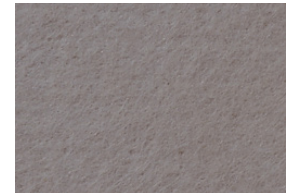
SO-03



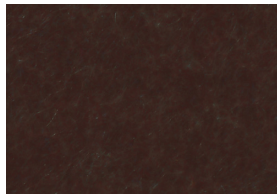
SO-04



SO-06



SO-07



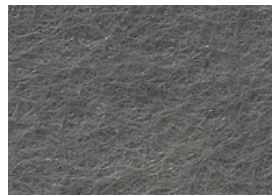
SO-08



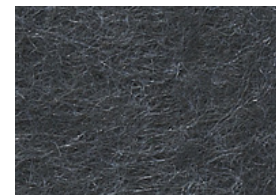
SO-09



SO-10



SO-11



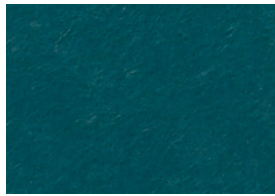
SO-12



SO-13



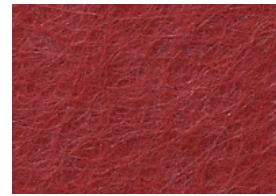
SO-14



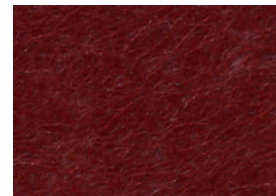
SO-15



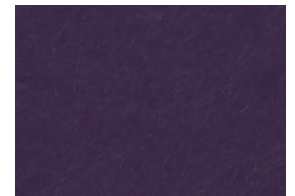
SO-16



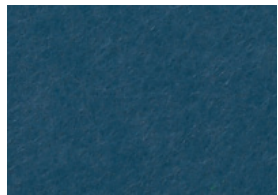
SO-17



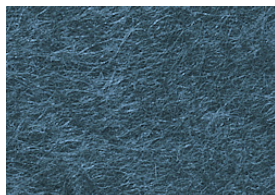
SO-18



SO-19



SO-20



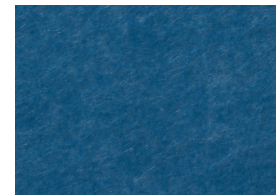
SO-21



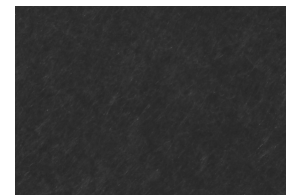
SO-22



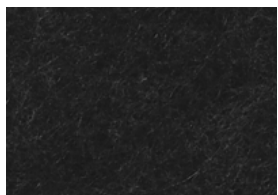
SO-23



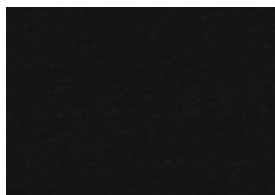
SO-24



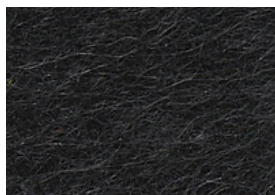
SO-25



SO-26



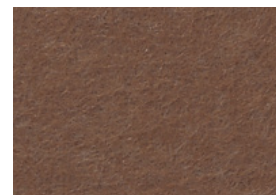
SO-27



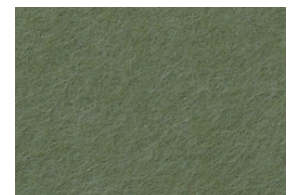
SO-28



SO-29



SO-30



SO-31

Always request physical samples prior to ordering to ensure color accuracy.



SO-32



SO-33



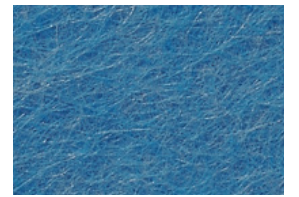
SO-34



SO-35



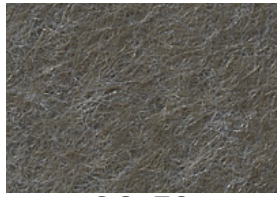
SO-36



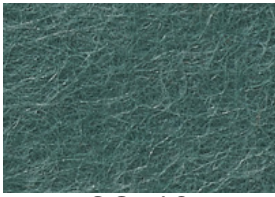
SO-37



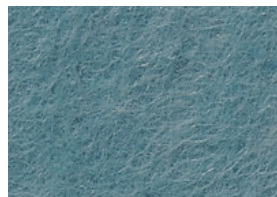
SO-38



SO-39



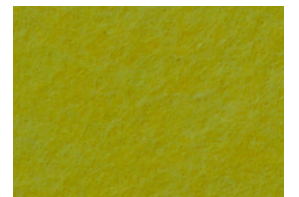
SO-40



SO-41



SO-42



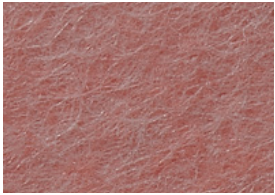
SO-43



SO-44



SO-45



SO-46



SO-47



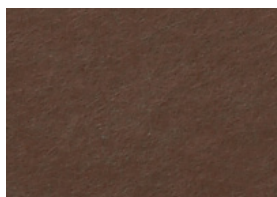
SO-48



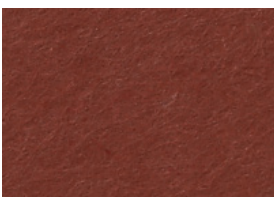
SO-49



SO-50



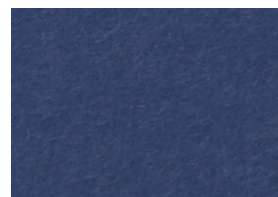
SO-51



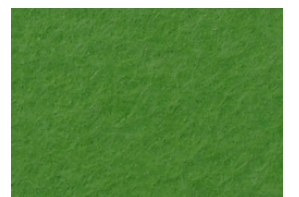
SO-52



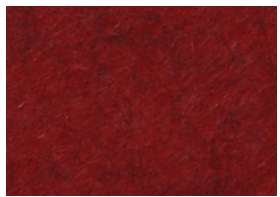
SO-53



SO-54



SO-55



SO-56



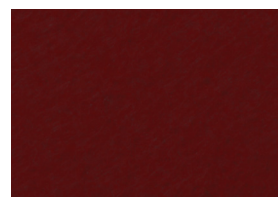
SO-57



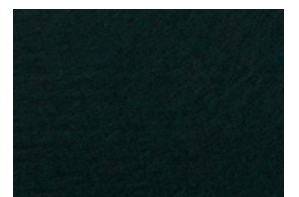
SO-58



SO-59



SO-60



SO-61

Always request physical samples prior to ordering to ensure color accuracy.

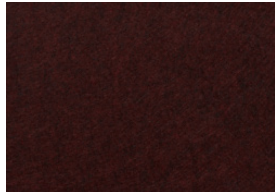
NEW COLORS



SO-62



SO-63



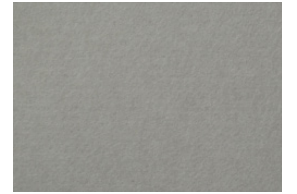
SO-64



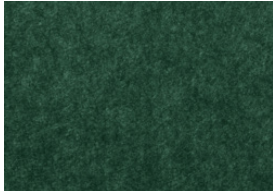
SO-65



SO-66



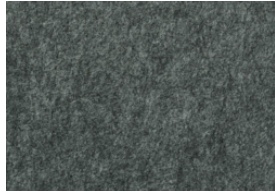
SO-67



SO-68



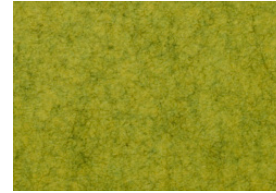
SO-69



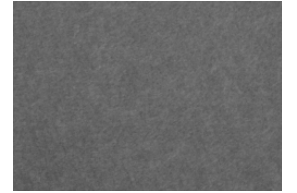
SO-70



SO-71



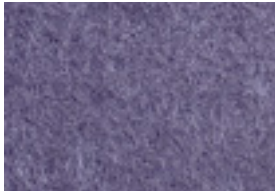
SO-72



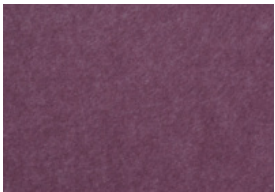
SO-73



SO-75



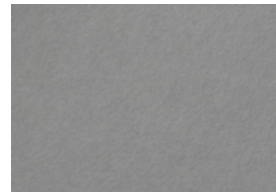
SO-76



SO-77



SO-78



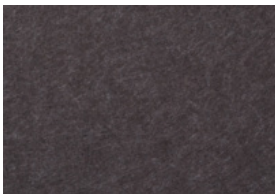
SO-79



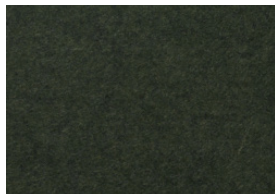
SO-80



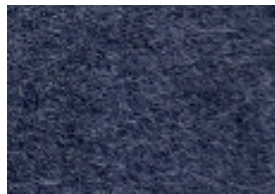
SO-81



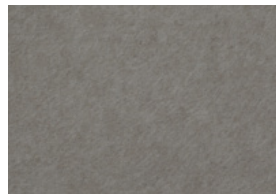
SO-82



SO-83



SO-84



SO-85



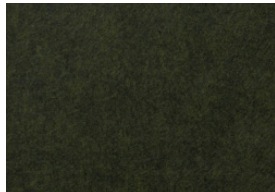
SO-86



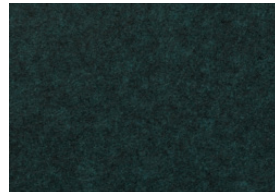
SO-87



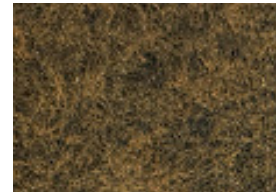
SO-88



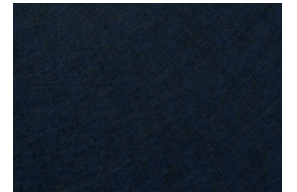
SO-89



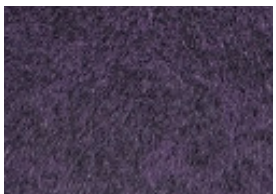
SO-90



SO-91



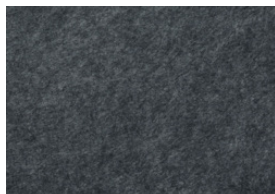
SO-92



SO-93



SO-94



SO-95